

FINFROCK[®]

Solutions

YOU HANDLE THE HOSPITAL.
WE'LL HANDLE THE PARKING.

SARASOTA
MEMORIAL HOSPITAL

PARKING

EXIT

EXIT

WALKER BRIDGE
EAST SIDE POOL

ENTRANCE

LEADERS IN HEALTHCARE PARKING, DESIGN AND CONSTRUCTION

PARKING THAT KEEPS CARE MOVING

FOR HEALTHCARE LEADERS, PARKING IS RARELY THE HEADLINE FEATURE OF A CAMPUS PROJECT, BUT IT IS OFTEN THE FIRST OPERATIONAL TEST.

When Sarasota Memorial Hospital broke ground on its new inpatient and surgical Oncology Tower, the flagship expansion of the Brian D. Jellison Cancer Institute, the focus was on delivering a new standard of care: an eight-story Oncology Tower designed to bring patients through every stage of treatment under one roof. But just as emergencies don't wait until you're prepared, hospital campuses don't pause for construction. On an active hospital campus, access is just as critical as the facility itself.

FINFROCK was selected to design and deliver the parking structure serving the new tower, **completing a 672-stall garage in less than nine months — from July 2023 to April 2024** — while construction progressed simultaneously around it. The work unfolded alongside the tower general contractor and the program architect, all within the constraints of a fully operational medical campus.

With no room for disruption, the team prioritized speed without sacrificing coordination. Portions of the garage were turned over early, allowing vehicles to begin parking before the structure was fully complete — a move that provided immediate relief to the campus and maintained momentum for the owner. Behind the scenes, the project required a high level of technical coordination, including structural tie-ins to the Oncology Tower, integrated foundations, and stormwater

management contained entirely within the garage footprint. When challenges arose, including a utility conflict, they were managed internally, without impacting the project schedule. The Oncology Garage represents FINFROCK's third parking structure for Sarasota Memorial, reinforcing a long-term partnership built on reliability and performance.

When a hospital system is expanding and adding towers, opening satellite facilities, and growing into new markets, parking is not a focal point, but it is essential. It must be delivered quickly, function seamlessly, and hold up over time. It also needs to be handled reliably, on schedule, and without requiring hospital leadership to become construction managers.

When hospitals grow, parking must grow with them, and FINFROCK has become the construction partner trusted to design and deliver it on schedule.

At Sarasota Memorial, the result is a parking solution that supports one of Southwest Florida's most advanced cancer care expansions — integrated into a campus that never stopped moving.

When hospitals grow, parking must grow with them, and FINFROCK has become the construction partner trusted to design and deliver it on schedule.

SARASOTA MEMORIAL
HOSPITAL ONCOLOGY





HIRE THE HEALTHCARE PARKING EXPERTS

With decades of experience, FINFROCK's teams are also deeply familiar with the permitting processes and operational standards unique to hospital campuses. That experience helps projects move efficiently through approvals and into construction, reducing the administrative burden on hospital leadership.

The big deal? One call replaces months of coordination.



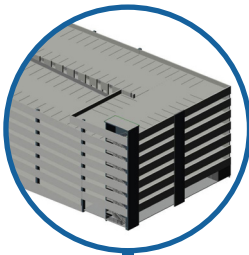
CALL US NOW TO MAKE PARKING THE EASIEST PART OF YOUR PROJECT

**JACOB LUCKY, SENIOR PROJECT EXECUTIVE
407-293-4000**



Construction Speed That Supports Care

While parking may represent a small portion of the overall budget, its impact on daily operations is immediate, making speed, continuity, and long-term performance critical. As Sarasota Memorial advanced cancer care, FINFROCK ensured the campus could keep moving with fast, reliable parking delivery.



FINFROCK's in-house design team models your entire building in 3D, giving you full visibility from day one, while we optimize the design for performance, efficiency, and budget.



Construction on the 672-stall garage began July 31, 2023, and reached completion April 23, 2024 — fewer than nine months from start to finish.

Site work begins: FINFROCK integrates seamlessly alongside other contractors, navigating site constraints and solving complexities early to keep construction moving forward without disruption.



The Final Result: a FINFROCK parking garage built for long-term performance, delivering durability, low maintenance, and reliability for decades to come.

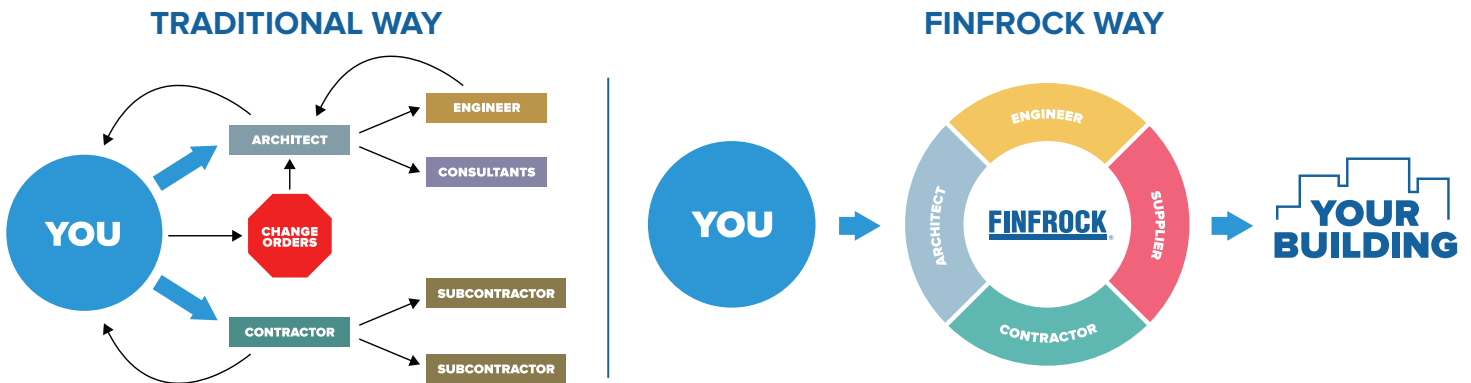


SET YOUR NEXT PROJECT UP FOR SUCCESS WITH FINFROCK

Before embarking on your next construction project, it's crucial to determine its feasibility and ensure a smooth journey from start to finish. That's why we encourage you to talk to us first.

At FINFROCK, we take pride in working with customers on every step of the building process, from concept to completion. Our in-house team consists of award-winning architects, engineers, manufacturing crews, and construction experts all working under one roof to deliver exceptional value and results.

Our approach minimizes risks, reduces costs, and accelerates the timeline to bring your investment to life.



By functioning as the first and last step in getting the building you want, FINFROCK minimizes client responsibility and risk as the sole point of contact throughout your building journey.



For additional information about our company, successful projects and our process, visit www.finfrock.com.

EXPERIENCE
A NEW WAY TO BUILD

MIXED USE

OFFICE

STUDENT HOUSING

HOTELS

MULTI-UNIT RESIDENTIAL

PARKING STRUCTURES

facebook.com/FINFROCKDMC

instagram.com/finfrockdmc

linkedin.com/company/finfrock

407-293-4000

finfrock.com